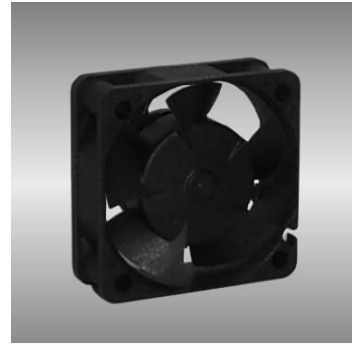


40

AGE series

40X40X15mm



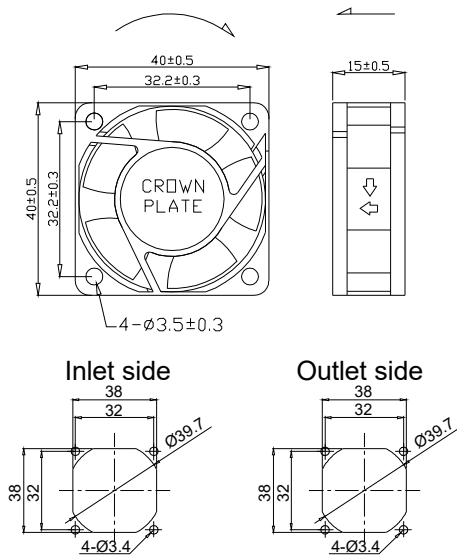
●General Specification / 一般規格

- Motor / DC brushless motor
- Material / Frame : plastic(94V-0)
Impeller : plastic(94V-0)
- Bearing / Ball bearing;FMB;sleeve bearing
- Weight / 25g
- 馬達 / 直流單向無刷馬達
- 材質 / 框：塑膠(94V-0)
葉：塑膠(94V-0)
- 軸承 / 滾珠軸承;FMB;含油軸承
- 重量 / 25克

●Specification / 詳細規格 * 軸承/bearing B: 雙滾珠/ball bearing F:FMB S: 含油軸承/sleeve bearing

Model 機型	Bearing 軸承	Voltage 電壓	Operating Vol. 操作電壓	Current 電流	Speed 轉速	Max. Air Flow 最大風量		Max. Static Pressure 最大風壓		Sound 噪音	P-Q P-Q曲線
P/N	B / S / F	V	V	A	RPM	m ³ /min	CFM	Pa	In-H ₂ O	dBA	No.
AGE04015_12L	B	12	7.0~13.2	0.08	6000	0.19	6.71	49.6	0.20	28	①
AGE04015_12M	B	12	7.0~13.2	0.12	7300	0.23	8.25	73.3	0.29	32	②
AGE04015_12H	B	12	7.0~13.2	0.16	8600	0.30	10.45	93.8	0.38	36	③

● Drawing & panel out-cuts/ 圖面及出入風口



● Characteristic Curves/ 特性曲線

