

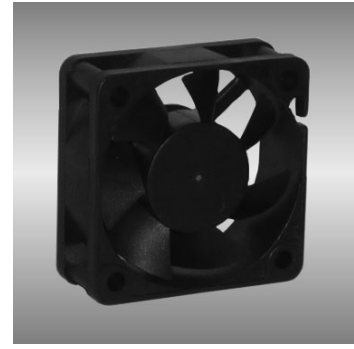
50

AGE series

50X50X20mm

●General Specification / 一般規格

- Motor / DC brushless motor
- Material / Frame : plastic(94V-0)
- Impeller : plastic(94V-0)
- Bearing / Ball bearing
- Weight / 40g
- 馬達 / 直流單向無刷馬達
- 材質 / 框：塑膠(94V-0)
- 葉：塑膠(94V-0)
- 軸承 / 滾珠軸承
- 重量 / 40克



●Specification / 詳細規格 * 軸承/bearing B: 雙滾珠/ball bearing F:FMB S: 含油軸承/sleeve bearing

| Model | Bearing | Voltage | Operating Vol. | Current | Speed | Max. Air Flow | | Max. Static Pressure | | Sound | P-Q |
|--------------|-----------|---------|----------------|---------|-------|---------------------|------|----------------------|---------------------|-------|-------|
| 機型 | 軸承 | 電壓 | 操作電壓 | 電流 | 轉速 | 最大風量 | | 最大風壓 | | 噪音 | P-Q曲線 |
| P/N | B / S / F | V | V | A | RPM | m ³ /min | CFM | Pa | In-H ₂ O | dBA | No. |
| AGE05020_12I | B / S | 12 | 7.0~13.2 | 0.10 | 4000 | 0.29 | 10.1 | 24.9 | 0.10 | 24 | ① |
| AGE05020_12J | B / S | 12 | 7.0~13.2 | 0.13 | 4800 | 0.36 | 12.7 | 34.9 | 0.14 | 28 | ② |
| AGE05020_12L | B / S | 12 | 7.0~13.2 | 0.15 | 5600 | 0.42 | 14.8 | 44.8 | 0.18 | 32 | ③ |
| AGE05020_12M | B / S | 12 | 7.0~13.2 | 0.21 | 6400 | 0.50 | 17.6 | 62.3 | 0.25 | 36 | ④ |
| AGE05020_12H | B / S | 12 | 7.0~13.2 | 0.21 | 7000 | 0.57 | 20.3 | 74.7 | 0.30 | 38 | ⑤ |
| AGE05020_24I | B / S | 24 | 14.0~26.4 | 0.07 | 4000 | 0.29 | 10.1 | 24.9 | 0.10 | 24 | ① |
| AGE05020_24J | B / S | 24 | 14.0~26.4 | 0.08 | 4800 | 0.36 | 12.7 | 34.9 | 0.14 | 28 | ② |
| AGE05020_24L | B / S | 24 | 14.0~26.4 | 0.10 | 5600 | 0.42 | 14.8 | 44.8 | 0.18 | 32 | ③ |
| AGE05020_24M | B / S | 24 | 14.0~26.4 | 0.12 | 6400 | 0.50 | 17.6 | 62.3 | 0.25 | 36 | ④ |
| AGE05020_24H | B / S | 24 | 14.0~26.4 | 0.12 | 7000 | 0.57 | 20.3 | 74.7 | 0.30 | 38 | ⑤ |

● Drawing & panel out-cuts/ 圖面及出入風口

● Characteristic Curves/ 特性曲線

