

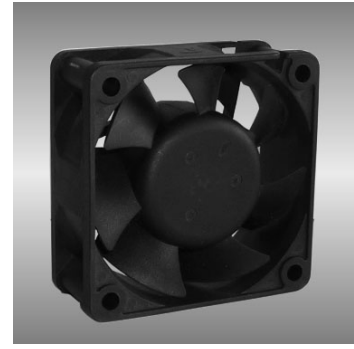
60

AGF series

60X60X25mm

●General Specification / 一般規格

- Motor / DC brushless motor
- Material / Frame : plastic(94V-0)
Impeller : plastic(94V-0)
- Bearing / Ball bearing;FMB
- Weight / 60g
- 馬達 / 直流單向無刷馬達
- 材質 / 框：塑膠(94V-0)
葉：塑膠(94V-0)
- 軸承 / 滾珠軸承;FMB
- 重量 / 60克



●Specification / 詳細規格 * 軸承/bearing B: 雙滾珠/ball bearing F:FMB S: 含油軸承/sleeve bearing

Model 機型	Bearing 軸承	Voltage 電壓	Operating Vol. 操作電壓	Current 電流	Speed 轉速	Max. Air Flow 最大風量	Max. Static Pressure 最大風壓	Sound 噪音	P-Q P-Q曲線
P/N	B / S / F	V	V	A	RPM	m ³ /min CFM	Pa In-H ₂ O	dBA	No.
AGF06025_12J	B / S	12	7.0~13.2	0.08	3100	0.48 17.1	29.9 0.12	26	①
AGF06025_12L	B / S	12	7.0~13.2	0.12	3600	0.61 21.5	39.8 0.16	31	②
AGF06025_12M	B / S	12	7.0~13.2	0.15	4250	0.68 24.0	54.8 0.22	34	③
AGF06025_12H	B / S	12	7.0~13.2	0.28	5000	0.95 33.6	62.3 0.25	40	④
AGF06025_12U	B	12	7.0~13.2	0.45	6800	1.24 43.8	139.4 0.56	56	⑤
AGF06025_12V	B	12	7.0~13.2	0.48	7500	1.36 47.9	196.7 0.79	63	⑥
AGF06025_12W	B	12	7.0~13.2	0.54	9800	1.57 55.5	291.3 1.17	66	⑦
AGF06025_24J	B / S	24	14.0~26.4	0.06	3100	0.48 17.1	29.9 0.12	26	①
AGF06025_24L	B / S	24	14.0~26.4	0.06	3600	0.61 21.5	39.8 0.16	31	②
AGF06025_24M	B / S	24	14.0~26.4	0.08	4250	0.68 24.0	54.8 0.22	34	③
AGF06025_24H	B / S	24	14.0~26.4	0.16	5000	0.95 33.6	62.3 0.25	40	④
AGF06025_24U	B	24	14.0~26.4	0.28	6800	1.24 43.8	139.4 0.56	56	⑤
AGF06025_48L	B / S	48	28.0~56.0	0.06	4250	0.68 24.0	54.8 0.22	34	③
AGF06025_48M	B / S	48	28.0~56.0	0.10	5000	0.95 33.6	62.3 0.25	40	④
AGF06025_48H	B	48	28.0~56.0	0.17	6800	1.24 43.8	139.4 0.56	56	⑤

● Drawing & panel out-cuts/ 圖面及出入風口

● Characteristic Curves/ 特性曲線

