

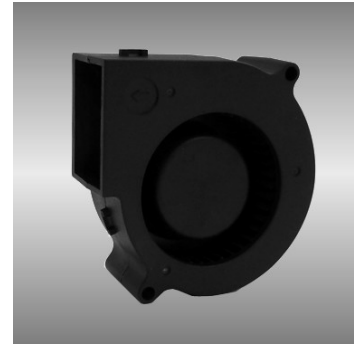
75

BGE series

75X75X30mm

●General Specification / 一般規格

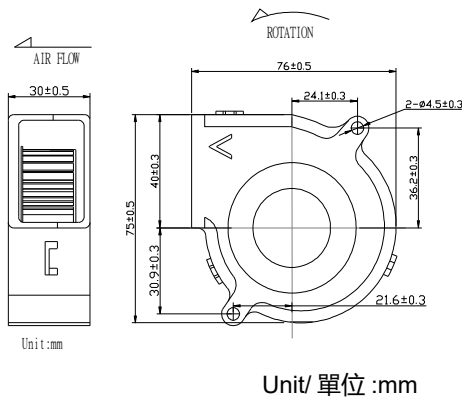
- Motor / DC brushless motor
- Material / Frame : plastic(94V-0)
- Impeller : plastic(94V-0)
- Bearing / Ball bearing;FMB
- Weight / 100g
- 馬達 / 直流單向無刷馬達
- 材質 / 框：塑膠(94V-0)
- 葉：塑膠(94V-0)
- 軸承 / 滾珠軸承;FMB
- 重量 / 100克



●Specification / 詳細規格 * 軸承/bearing B: 雙滾珠/ball bearing F:FMB S: 含油軸承/sleeve bearing

Model 機型	Bearing 軸承	Voltage 電壓	Operating Voltage 操作電壓	Current 電流	Speed 轉速	Max. Air Flow 最大風量	Max. Static Pressure 最大風壓	Sound 噪音	P-Q P-Q曲線		
Part No.	B / S / F	V	V	A	RPM	m ³ /min	CFM	Pa	In-H ₂ O	dBA	No.
BGE07530_12J	B/F	12	7.0~13.2	0.24	2600	0.31	10.9	77.2	0.31	32	①
BGE07530_12L	B/F	12	7.0~13.2	0.30	3000	0.36	12.7	89.6	0.36	41	②
BGE07530_12M	B/F	12	7.0~13.2	0.38	3600	0.48	17.0	119.5	0.48	48	③
BGE07530_12H	B/F	12	7.0~13.2	0.45	4000	0.60	21.4	154.4	0.62	51	④
BGE07530_24J	B/F	24	14.0~26.4	0.13	2600	0.31	10.9	77.2	0.31	32	①
BGE07530_24L	B/F	24	14.0~26.4	0.16	3000	0.36	12.7	89.6	0.36	41	②
BGE07530_24M	B/F	24	14.0~26.4	0.22	3600	0.48	17.0	119.5	0.48	48	③
BGE07530_24H	B/F	24	14.0~26.4	0.26	4000	0.60	21.4	154.4	0.62	51	④

● Drawing/ 圖面及出入風口



● Characteristic Curves/ 特性曲線

